



Advance your research on neurodegenerative diseases.

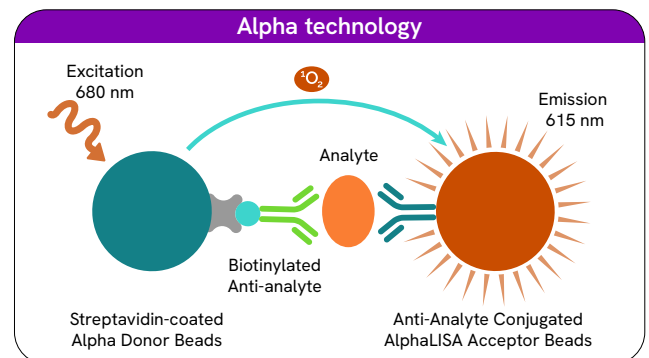
Neurodegenerative disorders encompass a range of progressive central nervous system (CNS) diseases that include Alzheimer's Disease, Parkinson's Disease, Amyotrophic Lateral Sclerosis and Frontotemporal Dementia, among others.

It is reported that about 40 million people around the globe are living with Dementia, and this number is likely to at least double by 2050.

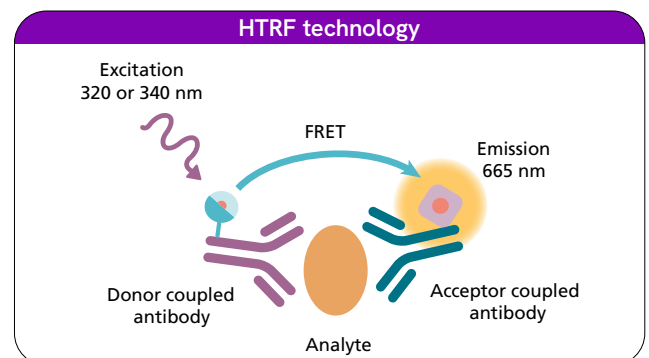
The study of all the neurodegenerative disorders and the associated molecular pathway represents one of the greatest challenges faced by researchers today.

Advance your research on neurodegenerative and neuroinflammation diseases and benefit from Revvity's broad offering of reagent technologies:

Homogeneous easy-to-use immunoassay kits for cell-based detection of cytokines, biomarkers, second messengers and cell signaling proteins providing fast and accurate results utilizing ALPHA and HTRF[®] assay platforms.



Alpha is a versatile, bead-based platform that enables you to assay the most complex samples in one well and with no wash steps.



HTRF is a fast, sensitive, homogeneous, and ready to use assay platform with no wash steps.

Neuroinflammation | Astrocytes

Table 1. Astrocytes Cytokines

	AlphaLISA®	HTRF®
IL-1β (Human)	AL220C	62HIL1BPEG
IL-1β (Mouse)	AL503C	62MIL1BPEG
IL-6 (Human)	AL223C	62HIL06PEG
IL-6 (Mouse)	AL504C	62MIL06PEG
IL-10 (Human)	AL218C	62HIL10PEG
IL-10 (Mouse)	AL502C	
IL-17 (Human)	AL219C	62HIL17PEG
IL-17 (Mouse)	AL590C	62MIL17PEG

References indicated for 500 tests, other kit sizes are also available

Table 2. Astrocytes, Phospho-Proteins

	AlphaLISA® SureFire® Ultra™	HTRF®
ERK1/2, Phospho -Thr202/ Tyr204	ALSU-PERK-A500	64AERPEG
ERK 1/2, Total	ALSU-TERK-A500	64NRKPEG
IKK-β, Phospho-Ser177/181	ALSU-PIKKB-A500	64KKBPEG
IKK-β, Total	ALSU-TIKKB-A500	63ADK097PEG
MEK1, Phospho-Ser218/222	ALSU-PMEK1-A500	64ME1PEG
MEK1, Phospho-Ser298		63ADK021PEG
MEK1, Total	ALSU-TMEK1-A500	64NE1PEG
NFκB, Phospho-Ser536	ALSU-PNFKB-A500	64NFBPEG
NFκB, Total	ALSU-TNFKB-A500	64NFTPEG
PLCg2, Phospho-Tyr1217	ALSU-PPLCG2-D500	64PLCG2Y7PEG
PLCg2, Total	ALSU-TPLCG2-A500	64PLCG2TPEG
STAT3, Phospho-Tyr705	ALSU-PST3-A500	62AT3PEG
STAT3, Total	ALSU-TST3-A500	64NT3PEG

References indicated for 500 tests, other kit sizes are also available

Table 3. Astrocytes Biomarkers

	AlphaLISA®	HTRF®
CCL2 / MCP1 (Human)	AL244C	62HCCL2PEG
CCL2 / MCP1 (Mouse)	AL509C	62MCCL2PEG
CXCL1 (Human)	AL349C	62HCXC1PEG
MMP9 (Human)	AL3138C	62MM9PEG
TGF-β (Human)	AL336C	62HTGFBPEG

References indicated for 500 tests, other kit sizes are also available

Neuroinflammation | Microglia

Table 4. Microglia, Phospho-Proteins

	AlphaLISA® SureFire® Ultra™	HTRF®
AKT 1/2/3, Phospho-Ser473	ALSU-PAKT-B500	64AKSPEG
AKT 1/2/3, Phospho-Thr308	ALSU-PAKT-A500	64AKTPEG
AKT 1/2/3, Total	ALSU-TAKT-B500	64NKTPEG
ATG16L1, Phospho-Ser278	ALSU-PATG-A500	64ATG16S8PEG
ATG16L1, Total	ALSU-TATG-A500	64ATG16TPEG
ATG14, Phospho-Ser29		64ATG14S9PEG
ATG14, Total		64ATG14TPEG
Beclin-1, Total	ALSU-TBEC-A500	
BTK, Phospho-Tyr223	ALSU-PBTK-A500	63ADK017PEG
BTK, Phospho-Tyr551	ALSU-PBTK-B500	
BTK, Total	ALSU-TBTK-A500	63ADK064PEG
DAP12, Phospho-pan Tyr	ALSU-PDAP12-A500	
DAP12, Total	ALSU-TDAP12-A500	
ERK1/2, Phospho -Thr202/ Tyr204	ALSU-PERK-A500	64AERPEG
ERK 1/2, Total	ALSU-TERK-A500	64NRKPEG
IKK-β, Phospho-Ser177/181	ALSU-PIKKB-A500	64KKBPEG
IKK-β, Total	ALSU-TIKKB-A500	63ADK097PEG
IRAK4, Total	ALSU-TIRAK-A500	63ADK108PEG
MKK4, Phospho-Ser257	ALSU-PMKK4-A500	64MK4PEG
MKK4, Total	ALSU-TMKK4-A500	64NK4PEG
NFκB, Phospho-Ser536	ALSU-PNFKB-A500	64NFBPEG
NFκB, Total	ALSU-TNFKB-A500	64NFTPEG
p62/SQSTM1, Phospho-Ser403	ALSU-PSQSTM-A500	64P62S4PEG
p62/SQSTM1, Total	ALSU-TSQSTM-A500	64N62PEG
PLCg2, Phospho-Tyr1217	ALSU-PPLCG2-D	64PLCG2Y7PEG
PLCg2, Total	ALSU-TPLCG2-A500	64PLCG2TPEG
SLP-76, Phospho-Ser376	ALSU-PSLP-A500	63ADK076PEG
SLP-76, Total	ALSU-TSLP-A500	63ADK077PEG
STING, Phospho-Ser366		64STGPEG
STING, Total	ALSU-TSTNG-A500	64NTGPEG
STING, Phospho-Ser365 (Mouse)		64MSTGPEG
STING, Total (Mouse)		64NMSTGPEG
SYK, Phospho-Tyr525/526	ALSU-PSYK-A500	64SYKY525PEG
SYK, Total	ALSU-TSYK-A500	64SYKTPEG

References indicated for 500 tests, other kit sizes are also available

Neuroinflammation | Microglia

Table 5. Microglia Biomarkers

	AlphaLISA®	HTRF®
p62/SQSTM1, Total (Human)	AL3097C	64N62PEG
TREM-2 (Human)	AL3109HV	63ADK099PEG

References indicated for 500 tests, other kit sizes are also available

Table 6. Microglia Cytokines

	AlphaLISA®	HTRF®
IFN-β (Human)	AL3133C	62HIFNBPEG
IFN-β (Mouse)		62MIFNBPEG
IL-1β (Human)	AL220C	62HIL1BPEG
IL-1β (Mouse)	AL503C	62MIL1BPEG
IL-2 (Human)	AL221C	62HIL02PEG
IL-2 (Mouse)	AL585C	62MIL02PEG
IL-4 (Human)	AL266C	62HIL04PEG
IL-4 (Mouse)	AL567C	
IL-6 (Human)	AL223C	62HIL06PEG
IL-6 (Mouse)	AL504C	62MIL06PEG
IL-18 (Human)	AL3137C	62HIL18PEG

References indicated for 500 tests, other kit sizes are also available

Table 7. Microglia Second Messengers

	AlphaLISA®	HTRF®
IP-One - Gq	AL3144C	62IPAPEB

References indicated for 500 tests, other kit sizes are also available

Alzheimer's disease

Table 8. Phospho-Proteins

	AlphaLISA® SureFire® Ultra™	HTRF®
AKT 1/2/3, Phospho-Ser473	ALSU-PAKT-B500	64AKSPEG
AKT 1/2/3, Phospho-Thr308	ALSU-PAKT-A500	64AKTPEG
AKT 1/2/3, Total	ALSU-TAKT-B500	64NKTPEG
BAD, Phospho-Ser112		64BADPEG
Beclin-1, Total	ALSU-TBEC-A500	
CaMKII, Phospho-T286	ALSU-PCAM-A500	
CaMKII, Total	ALSU-TCAM-A500	
CDK5, Total (Human)	ALSU-TCDK5-A500	
ERK1/2, Phospho -Thr202/ Tyr204	ALSU-PERK-A500	64AERPEG
ERK1/2, Total	ALSU-TERK-A500	64NRKPEG
GSK-3β, Phospho-Ser9	ALSU-PGS3B-A500	64GPBPEG
GSK-3β, Total	ALSU-TGS3B-A500	64GTBPEG
MLKL, Phospho-Ser358	ALSU-PMLKL-B500	

	AlphaLISA® SureFire® Ultra™	HTRF®
MLKL, Total	ALSU-TMLKL-A500	
MLKL, Phospho-Ser345 (Mouse)	ALSU-PMLKL-A500	
MLKL, Total (Mouse)	ALSU-TMLKL-B500	
RIPK1-Ser166	ALSU-PRIPK1-A500	64RIPK1S1PEG
RIPK1, Total	ALSU-TRIPK1-A500	64RIPK1TPEG
SQSTM1 p62, Total	ALSU-TSQSTM-A500	
Tau, Phospho-Ser202/Thr205	ALSU-PTAU-E500	6FPTAPEG
Tau, Phospho-Ser356		64TS356PEG
Tau, Phospho-Ser422		64TS422PEG
Tau, Phospho-Ser214 (Human)	ALSU-PTAU-A500	
Tau, Phospho-Ser404 (Human)	ALSU-PTAU-C500	
Tau, Phospho-Ser396 (Human)	ALSU-PTAU-B500	
Tau, Phospho-Thr181	ALSU-PTAU-D500	64TT181PEG
Tau, Total (Human)	ALSU-TTAU-D500	64NTAUPEG
Aggregated TDP43	ALSU-ATDP43-A500	62TDP43PEG
TDP43, Phospho Ser409/410 (Mouse)	ALSU-PTDP43-B500	64TDPS4PEG
TDP43, Total (Mouse)	ALSU-TTDP43-B500	64TDPS4PEG

References indicated for 500 tests, other kit sizes are also available

Table 9. Biomarkers and Cytokines

	AlphaLISA®	HTRF®
Amyloid Oligomers	AL334C	
Amyloid β 1-15 (Human)	AL274C	
Amyloid β 1-40 (Human)	AL373C	62B40PEG
Amyloid β 1-42 (Human)	AL203C	62B42PEG
Amyloid β 1-42 (Mouse)	AL507C	
Amyloid β 1-x (Human)	AL288C	
BACE-1 (Human)	AL3033C	
BDNF (Human)	AL317C	62BDNFPEG
GDNF (Human)	AL319C	
IL-1β (Human)	AL220C	62HIL1BPEG
IL-1β (Mouse)	AL503C	62MIL1BPEG
IL-4 (Human)	AL266C	62HIL04PEG
IL-4 (Mouse)	AL567C	
IL-6 (Human)	AL223C	62HIL06PEG
IL-6 (Mouse)	AL504C	62MIL06PEG
NFL (Human)	AL3123C	
PARP Cleaved-Asp214		64PARPEG
Protein Disaggregation		64DAGGRPEG
Tau (Human)	AL271C	64NTAUPEG
Tau Aggregation		6FTAUPEG
TNFα (Human)	AL208C	62HTNFPEEG
TNFα (Mouse)	AL505C	62MTNFPEEG
β-NGF (Human)	AL246C	

References indicated for 500 tests, other kit sizes are also available

Parkinson's disease

Table 10. Biomarkers

	AlphaLISA®	HTRF®
BDNF (Human)	AL317C	62BDNFPEG
GDNF (Human)	AL319C	
IL-1β (Human)	AL220C	62HIL1BPEG
IL-1β (Mouse)	AL503C	62MIL1BPEG
IL-6 (Human)	AL223C	62HIL06PEG
IL-6 (Mouse)	AL504C	62MIL06PEG
LC3B (Human)	AL306C	
NFL (Human)	AL3123C	
PARP Cleaved-Asp214		64PARPEG
Protein Disaggregation		64DAGGRPEG
TNF-α (Human)	AL208C	62HTNFAPEG
TNF-α (Mouse)	AL505C	62MTNFAPEG
TOM20		64TOM20PEG
β-NGF (Human)	AL246C	

References indicated for 500 tests, other kit sizes are also available

Table 11. Phospho-Proteins

	AlphaLISA® SureFire® Ultra™	HTRF®
α-Synuclein Aggregation	ALSU-AASYN-A500	6FASYPEG
α-Synuclein, Phospho-Ser129	ALSU-PASYN-B500	6FSYNPEG
α-Synuclein, Total	ALSU-TASYN-B500	6FNSYPEG
AKT 1/2/3, Phospho-Ser473	ALSU-PAKT-B500	64AKSPEG
AKT 1/2/3, Phospho-Thr308	ALSU-PAKT-A500	64AKTPEG
AKT 1/2/3, Total	ALSU-TAKT-B500	64NKTPPEG
AMPK, Phospho-Thr172	ALSU-PAMPK-A500	64MPKPEG
AMPK, Total	ALSU-TAMPK-A500	63ADK060PEG
BAD, Phospho-Ser112		64BADPEG
Beclin-1, Total	ALSU-TBEC-A500	
CDK5, Total	ALSU-TCDK5-A500	
ERK1/2, Phospho -Thr202/ Tyr204	ALSU-PERK-A500	64AERPEG
ERK 1/2, Total	ALSU-TERK-A500	64NRKPEG
GSK3β, Total	ALSU-TGS3B-A500	
JNK1/2/3, Phospho-Thr183/ Tyr185	ALSU-PJNK-A500	64JNKPEG
LRRK2, Phospho-Ser910	ALSU-PLRRK2-C500	
LRRK2, Phospho-Ser935	ALSU-PLRRK2-A500	6FLRKPEG
LRRK2, Phospho-Ser955	ALSU-PLRRK2-B500	
LRRK2, Total	ALSU-TLRRK2-A500	6FNKPEG
MAPK p38, Phospho-Thr180/ Tyr182	ALSU-PP38-B500	64P38PEG
MAPK p38, Total	ALSU-TP38-B500	

	AlphaLISA® SureFire® Ultra™	HTRF®
MKK4, Phospho-Ser257	ALSU-PMKK4-A500	64MK4PEG
MKK4, Total	ALSU-TMKK4-A500	64NK4PEG
mTOR, Phospho-Ser2448	ALSU-PMTOR-C500	64TORPEG
mTOR, Phospho-Ser2481	ALSU-PMTOR-B500	
mTOR, Total	ALSU-TMTOR-B500	
RAB 8A, Phospho-Ser111	ALSU-PRAB8-A500	
RAB 8A, Phospho-Thr72	ALSU-PRAB8-B500	
RAB 8A, Total	ALSU-TRAB8-A500	
RAB10, Phospho-Thr73	ALSU-PRAB-A500	64RAB73PEG
RAB10, Total	ALSU-TRAB-A500	64RAB10TPEG
TBK1, Phospho-Ser172	ALSU-PTBK1-A500	64TBKPEG
TBK1, Total	ALSU-TTBK1-A500	64NTBPEG
Ubiquitin, Phospho-Ser65	ALSU-PUBI-A500	64UBIS65PEG
Ubiquitin, Total	ALSU-TUBI-A500	
ULK1, Phospho-Ser556	ALSU-PULK1-A500	
ULK1, Phospho-Ser757/Ser758	ALSU-PULK1-B500	64ULKPEG
ULK1, Total	ALSU-TULK1-A500	

References indicated for 500 tests, other kit sizes are also available

Amyotrophic Lateral Sclerosis (ALS) FrontoTemporal Dementia (FTD) Huntington's disease (HT)

Table 12. Biomarkers and Cytokines

	AlphaLISA®	HTRF®
Ataxin 2, Total		64ATA2PEG
BCL-2 (Human)	AL384C	
GAD67 (Human)	AL397C	63ADK002PEG
Progranulin (Human)		62PROPEG
IL-1β (Human)	AL220C	62HIL1BPEG
IL-1β (Mouse)	AL503C	62MIL1BPEG
IL-6 (Human)	AL223C	62HIL06PEG
IL-6 (Mouse)	AL504C	62MIL06PEG
IL-8 (Human)	AL224C	62HIL08PEG
LC3B (Human)	AL306C	
NFL (Human)	AL3123C	
PARP Cleaved-Asp214		64PARPEG
Protein Disaggregation		64DAGGRPEG
TDP-43 (Human)	AL387C	
TDP-43 Aggregation (Human/Mouse)	ALSU- ATDP43-A500	62TDP43PEG
TNFα (Human)	AL208C	62HTNFAPEG
TNFα (Mouse)	AL505C	62MTNFAPEG

References indicated for 500 tests, other kit sizes are also available

Amyotrophic Lateral Sclerosis (ALS) FrontoTemporal Dementia (FTD) Huntington's disease (HT)

Table 13. Phospho-Proteins

	AlphaLISA® SureFire® Ultra™	HTRF®
AMPK, Phospho-Thr172	ALSU-PAMPK-A500	64MPKPEG
AMPK, Total	ALSU-TAMPK-A500	63ADK060PEG
BAD, Phospho-Ser112		64BADPEG
Beclin-1, Total	ALSU-TBEC-A500	
MLKL, Phospho-Ser358	ALSU-PMLKL-B500	64MLKLS8PEG
MLKL, Total	ALSU-TMLKL-A500	64MLKLTPEG
MLKL, Phospho-Ser345 (Mouse)	ALSU-PMLKL-A500	
MLKL, Total (Mouse)	ALSU-TMLKL-B500	
Mutant Huntingtin (mHTT), Mutant (Human/Mouse)		64HTTMPEG
Mutant Huntingtin (mHTT), Total (Human/Mouse)		64HTTTPEG
mTOR, Phospho-Ser2448	ALSU-PMTOR-C500	64TORPEG
mTOR, Phospho-Ser2481	ALSU-PMTOR-B500	
mTOR, Total	ALSU-TMTOR-B500	
RIPK1, Phospho-Ser166	ALSU-PRIPK1-A500	64RIPK1S1PEG
RIPK1, Total	ALSU-TRIPK1-A500	64RIPK1TPEG
TBK1, Phospho-Ser172	ALSU-PTBK1-A500	64TBKPEG
TBK1, Total	ALSU-TTBK1-A500	64NTBPEG
TDP43, Aggregated	ALSU-ATDP43-A500	62TDP43PEG
TDP43, Phospho-Ser409/410	ALSU-PTDP43-A500	64TDPS4PEG
TDP43, Total	ALSU-TTDP43-A500	64TDPTPEG
ULK1, Phospho-Ser556	ALSU-PULK1-A500	
ULK1, Phospho-Ser757/Ser758	ALSU-PULK1-B500	64ULKPEG
ULK1, Total	ALSU-TULK1-A500	

References indicated for 500 tests, other kit sizes are also available

Autophagy / Mitophagy

Table 14.

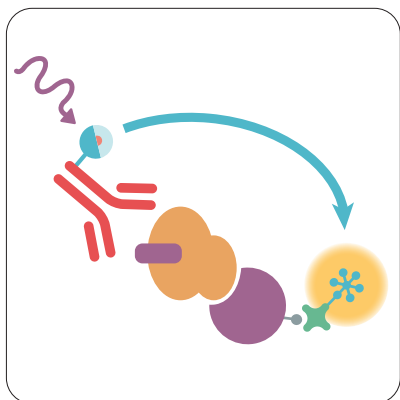
	AlphaLISA®	HTRF®
AMPK, Phospho-Thr172	ALSU-PAMPK-A500	64MPKPET
Atg14, Phospho-Ser29		64ATG14S9PEG
Atg14, Total		64ATG14TPEG
Atg16, Phospho-Ser278	ALSU-PATG-A500	64ATG16S8PEG
Atg16, Total	ALSU-TATG-A500	64ATG16TPEG
BAD, Phospho-Ser112		64BADPEG
Beclin-1	ALSU-TBEC-A500	
Cleaved PARP		64PARPEG
LC3B	AL306C	
NRF2, Total		64NRF2TPEG
PINK1, Total		64PINKTPEG
p62/STSQM1, Phospho Ser351	ALSU-PSQSTM-A500	
p62/STSQM1, Phospho Ser403	ALSU-PSQSTM-B500	64P62S4PEG
TBK1, Phospho-Ser172	ALSU-PTBK1-A500	64TBKPEG
TFEB, Phospho-Ser122	ALSU-PTFEB-A500	
TFEB, Phospho-Ser211	ALSU-PTFEB-B500	64TFEBS2PEG
TFEB, Total	ALSU-TTFEB-A500	64TFEBTPEG
TOM20		64TOM20PEG
mTOR, Phospho Ser2448	ALSU-PMTOR-C500	64TORPEG
mTOR, Total	ALSU-TMTOR-B500	
Ubiquitin, Phospho-Ser65	ALSU-PUBI-A500	64UBIS65PEG
ULK1, Phospho-Ser556	ALSU-PULK1-A500	
ULK1, Phospho-Ser757/Ser758	ALSU-PULK1-B500	64ULKPEG
ULK1, Total	ALSU-TULK1-A500	
XBP1s		64XBPSTPEG
XBP1, Total		64XBPTPEG

References indicated for 500 tests, other kit sizes are also available

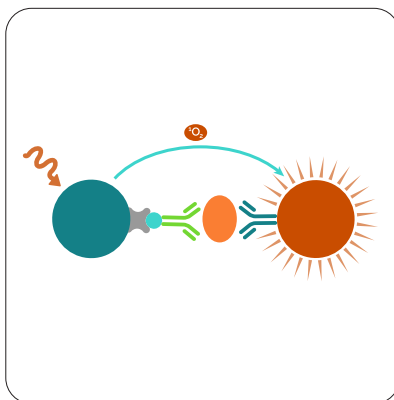
Custom labeling and custom assay development services

Don't see the assay you need listed here? Revvity has partnered with industry and academia professionals to develop custom solutions to dramatically shorten the drug development process using our powerful, accurate HTRF, DELFIA and AlphaLISA technologies.

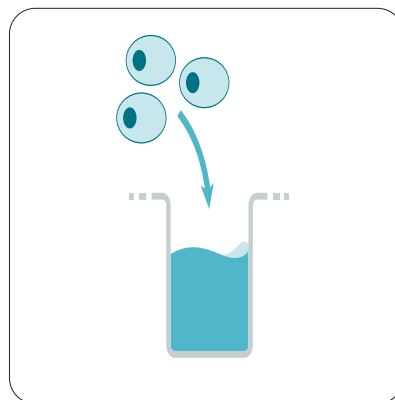
An experienced Project Manager will evaluate your project's chance of success, then work with you to create a customized assay for the target you need to advance your research.



Biochemical assay



Elisa conversion



Cell-based assays

For more information, visit www.revvity.com



revvity